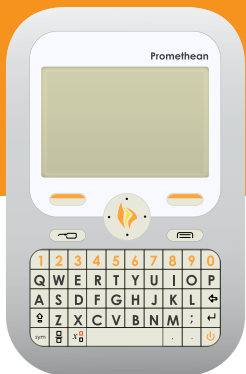


Learning Clip

Using Activexpression 2 handsets with Learning Clip self paced voting



Quick start guide

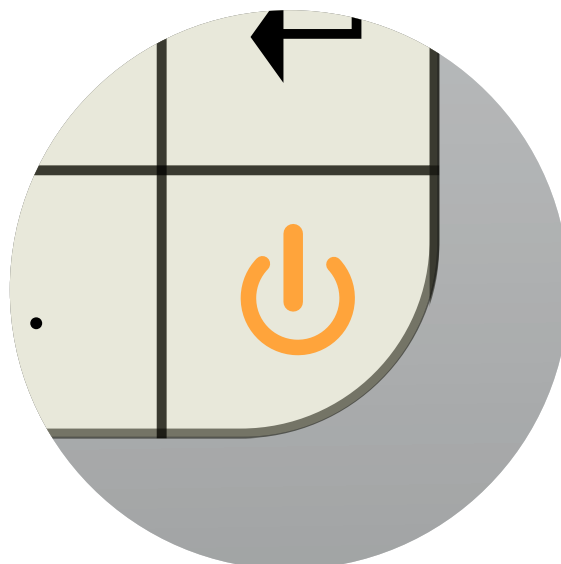
Contents

Turning an Activexpression 2 hand set on/ off	1
Sending an answer	2
Clear display	3
Display scrolling	4
Response selection	5
Navigation	6

Every student can answer the question. Questions are the same format as the standard IWB activity.

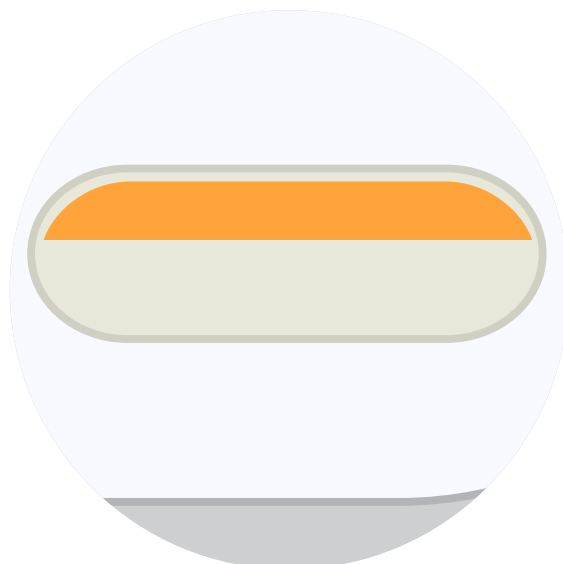
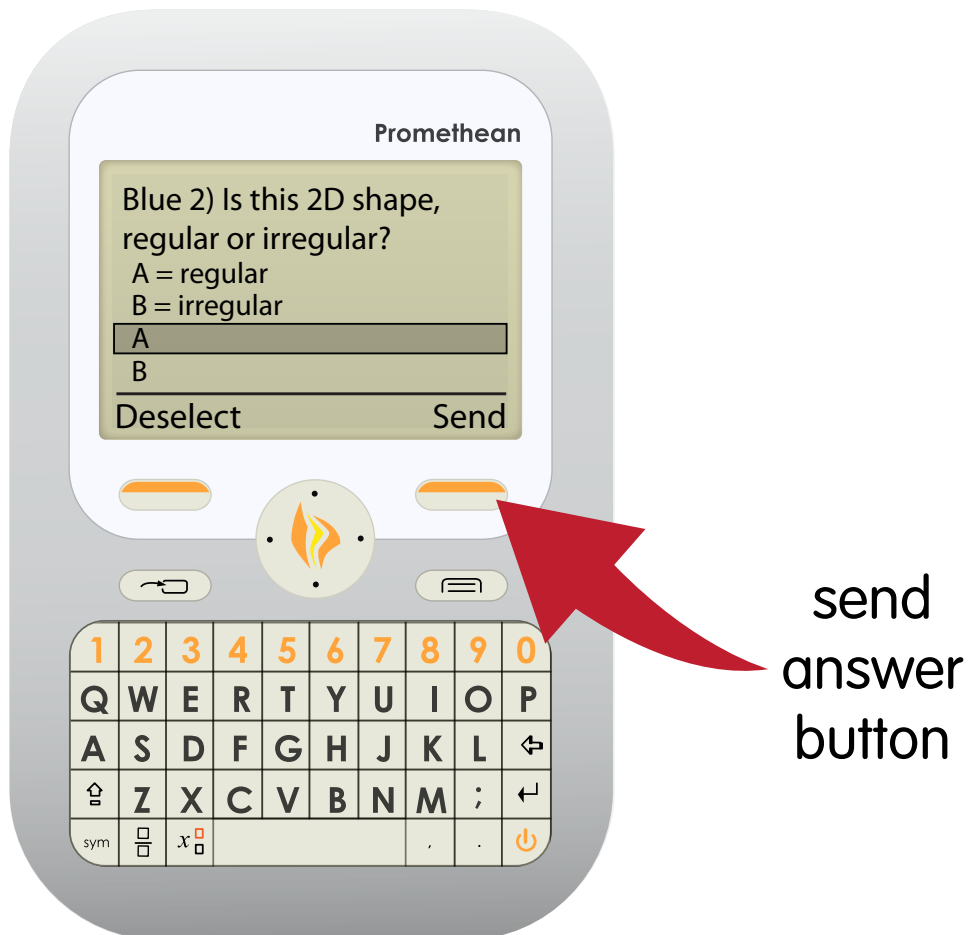
Turning an Activexpression 2 hand set on/ off

Activexpression 2 handsets employ a standard 'Qwerty' keyboard with a set of bespoke function keys used to perform repetitious tasks. To turn the handset on and off press and hold the power button for 2 seconds and release.



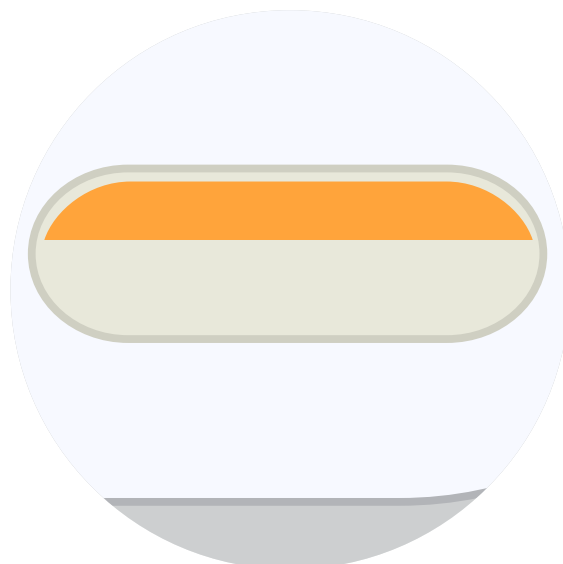
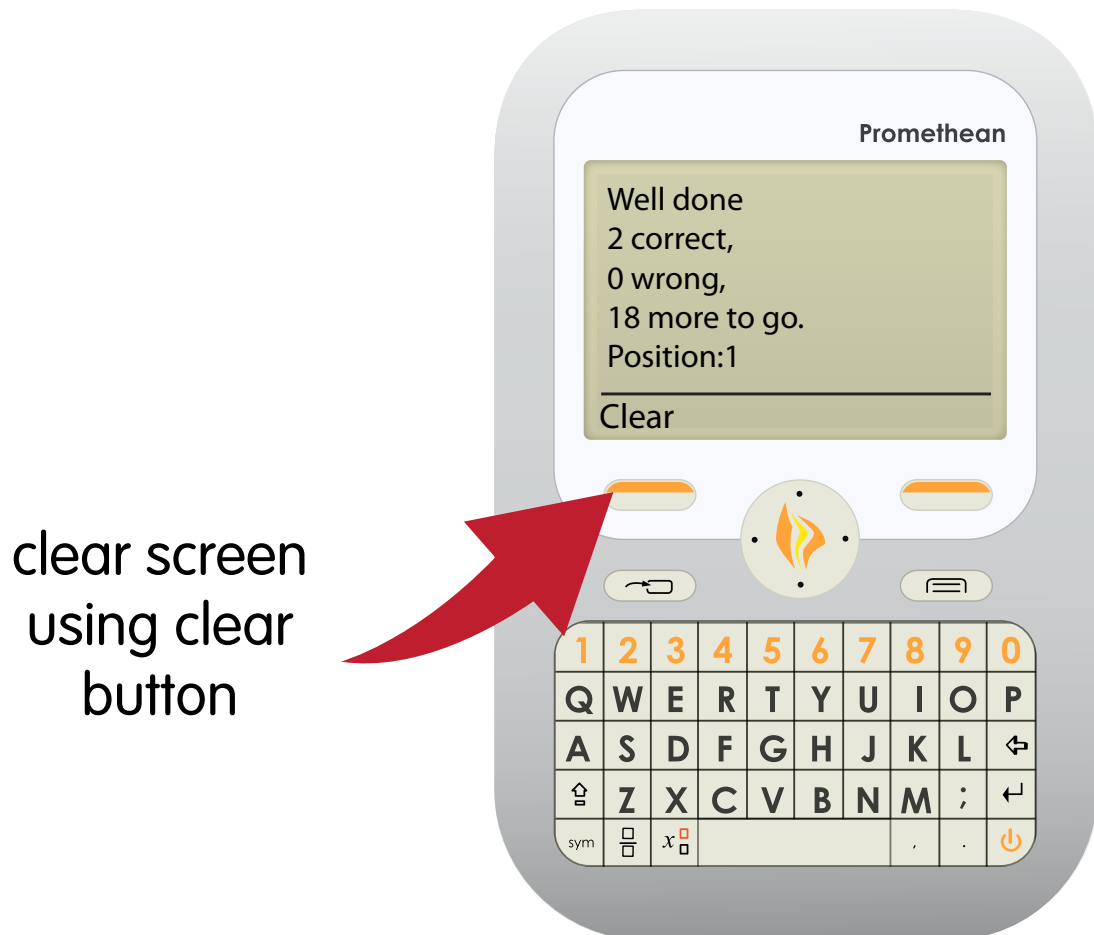
Sending an answer

Following the selection of an answer or the input of a response the display will show a 'Send' message. Pressing the multi-function button directly below 'send' will submit the answer/response.



Clear display

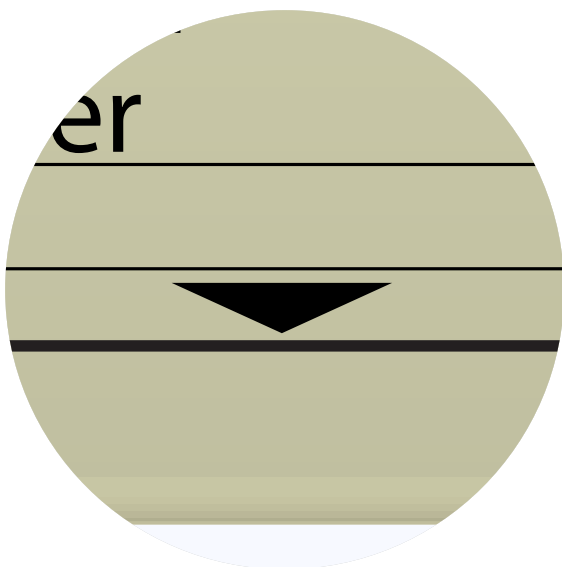
Messages presented on the screen can be removed using when 'Clear' is displayed. Pressing the multi-function button directly below 'Clear' will remove the message from the display.



Display scrolling

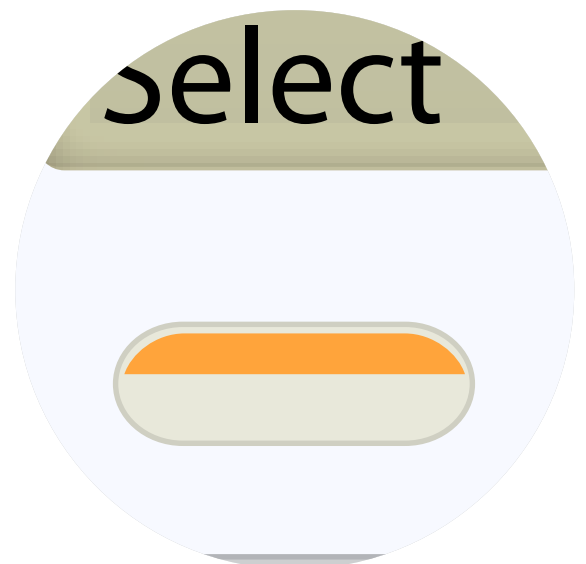
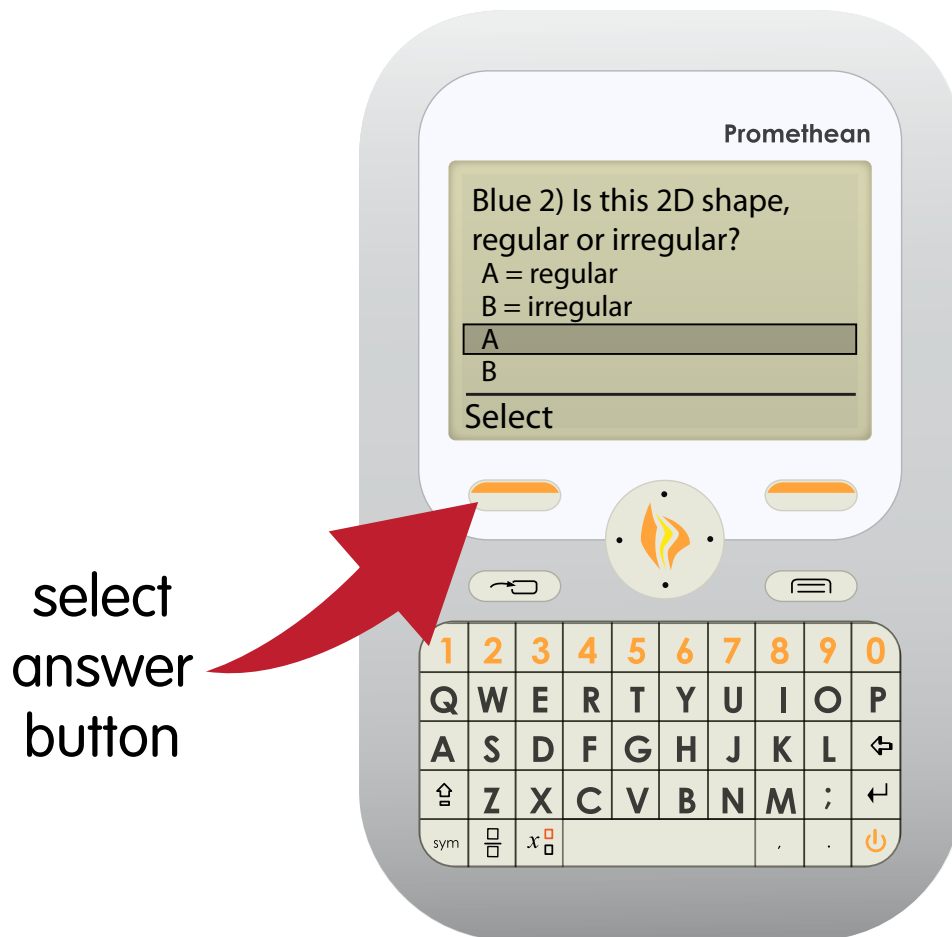
Text displayed on the device is not limited to the size of the screen. If a message or question requires more space a scroll icon will be displayed on the screen. To scroll up or down use the multi-directional 'Promethean' button.

indicates that
the display
can be scrolled



Response selection

Several question types have multi-response selections. If one such question is displayed a list of possible answers is included. Use the multi-directional 'Promethean' button to scroll through the list. The display will show a 'Select' message. Pressing the multi-function button directly below 'Select' will select an highlighted answer.



Navigation

Use the multi-directional 'Promethean' button to navigate lists and scroll questions.

